

Living up to Life

*Leica*  
MICROSYSTEMS



# Leica EM GP

Automatic Plunge Freezer for the Bare Grid Technique

# Leica EM GP

## Automated Plunge Freezing with Bare Grid Technique

For the preparation of vitrified fluid samples or extremely thin samples for cryo-TEM, including biological suspensions and industrial emulsions in both, aqueous and inorganic solvents. The EM GP can be used to plunge freeze samples not only on EM grids, but also sapphire discs and samples in freeze fracture planchettes.

### THE BARE GRID TECHNIQUE

Many specimens for cryo-TEM can be prepared by immersion freezing, where a fluid sample is pipetted onto an EM grid (usually coated) and the excess removed until a thin film remains, before plunging into a cryogen such as liquid ethane. The grid can then be directly transferred under cryo conditions to the cryo electron microscope (cryo-TEM) for observation. This is the bare grid technique.

The bare grid technique can be used for many types of sample ranging from biological cell sub units to industrial emulsions. Imaging macromolecular assemblies, viruses and cells in their native, hydrated environment in the cryo-TEM is the state-of-the-art technique in electron microscopy, providing maximum resolution with minimal specimen damage.



# Discover the features

## OUTSTANDING REPRODUCIBILITY AND SAMPLE QUALITY

---

### Sensor controlled blotting

- › No further calibration needed
- › Blotting gives equal distributed surface on grid for perfect imaging results
- › Very soft blotting possibility to protect very sensitive samples
- › Quick and efficient blotting

### Automated blotting

- › Blotting gives equal distributed surface on grid for perfect results
- › Quick and efficient blotting
- › Double side blotting for efficient removal of excessive fluid on grid for perfect cryo fixation

### Multiple blotting

- › Blotting of very viscous samples for perfect cryo fixation

---

### Environmental chamber

- › Temperature and humidity controlled protective environment variable between +4 °C and +60 °C and room humidity to 99 %
- › To provide a clear view, an anti-fogging heater keeps the glass window clear

## EASE OF USE FOR MULTIUSER ENVIRONMENT

---

### External touch screen user interface

- › Easy and accurate programming
- › For multiuser environment
- › Intuitive software with user library
- › Fast learning process

### Viewing system

- › Stereomicroscope with LED to facilitate sample preparation and alignment

## INCREASED SAFETY

---

- › Special secondary cryogen filling system for easy and accurate filling

# Control Panel

## PROGRAM SCREEN

All parameters can be adjusted and set for up to 10 programs. In the Setup menu the positioning of the grid relative to the blotter can be adjusted and also the transfer position after plunging.

## SAFETY

The Leica EM GP operates under strict safety conditions. During any movement of the environmental chamber a large red STOP button appears on the control panel. Touching this button will immediately stop any movement. An alarm signals when either the secondary cryogen is too warm and may evaporate or the LN<sub>2</sub> level is too low.

## BAKE-OUT

At the end of a run the bake-out cycle takes 60 minutes to dry the Dewar and environmental chamber, which allows a second run within a short time if the user does not wish to maintain the LN<sub>2</sub> level in the Dewar.

**Main screen**

Program in use

Current temperature of environmental chamber

Current humidity of environmental chamber

Current temperature of ethane container

LN<sub>2</sub> level

STOP

Load Forceps

Lower Chamber

Rotate Home Blot /A-Plunge

Plunge

Transfer

Setup

Bake out

Manual Rotation

Count 10

Light

Sets start position to accept forceps

Chamber moves downwards ready for dispensing suspension

Blotting/plunging sequence

Press to raise grid in ethane and increase Dewar GN<sub>2</sub> production to keep out moisture

Countdown for blotter exchange

**Program screen**

Rotate grid after applying suspension

Plunge automatically after blotting

Blotting time

Program number

Scroll through programs 1–5 or 6–10

Nr.	Blotting Sensor	A-Plunge	Delay	Blot	Hold
1	✓	✓	0.0	0.0	0.0
2	✓	✓	0.0	0.5	0.0
3	✓	✓	0.0	0.0	0.0
4		✓	0.0	0.0	0.0
5			0.0	0.0	0.0

OK

Rotate grid before applying suspension

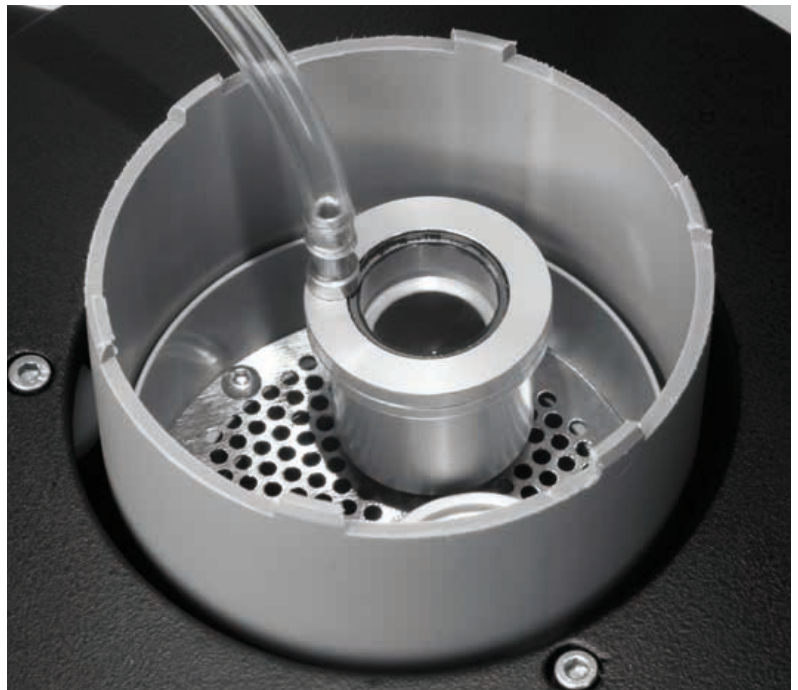
Blotting with blot sensor activated

Delay time before blotting

Delay before freezing after blotting

# The Dewar

After switching on the Leica EM GP, the 1 liter Dewar can be filled with LN<sub>2</sub> before liquefying the secondary cryogen, usually ethane. A full Dewar lasts for approximately 1 hour between refilling. Liquefying the secondary cryogen is fast, easy and safe with the liquefying head. The head is connected to the secondary cryogen regulator of the gas bottle and the gas slowly fed in. It condenses within seconds, taking about one minute to fill the 2.5 ml container. A cover is provided to prevent LN<sub>2</sub> splashing into the ethane on subsequent refilling of the LN<sub>2</sub>. The temperature of the secondary cryogen can be controlled precisely from the control panel. A container, filled with LN<sub>2</sub>, sits in the Dewar to hold a grid box for transfer of prepared, vitrified samples.



LIQUEFIER IN PLACE over ethane container in Dewar



AFTER FREEZING

the grid remains in or above the ethane (depending upon user settings) ready for transfer to the grid box

# EM GP Adapter for Cryo TEM Transfer

The Leica EM GP adapter for cryo TEM transfer was developed to meet the increased customer demands for an optimized cryo TEM transfer workflow for grid plunge applications.

This unique adapter can be customized to existing cryo transfer systems and ensures an easy and safe sample transport from EM GP to the cryo TEM.

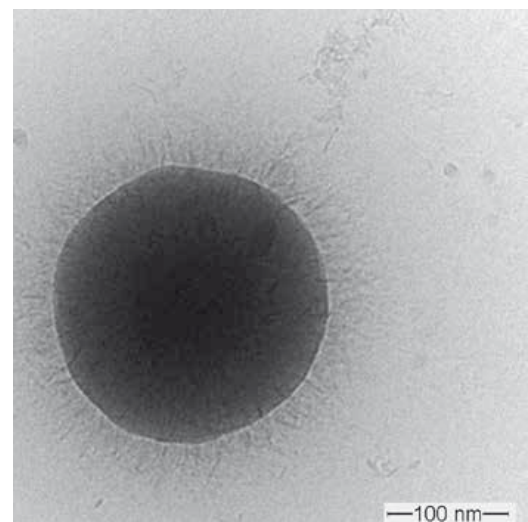
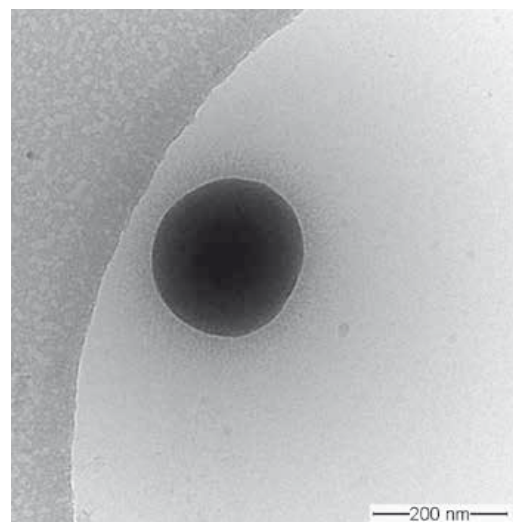
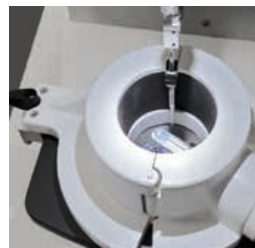
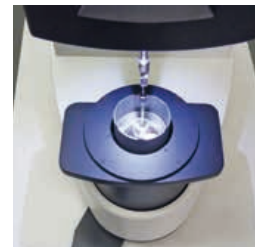
- › No “snowing” contamination
- › Fast sample transport avoids thawing and increases sample safety by preventing ice cristall formation

PH dependent self assembly of Polyacrylic Acid (PAA) brushes on Sub-micron silica spheres:

Left: Sub-micron silica spheres, covered with polyacrylic acid (PAA) brushes.

Right: The PAA of the particle is swollen and shows the typical hairy structure of polymer brushes.

Micrographs courtesy of L. Schellkopf, Leibniz Institute of Dresden, Germany

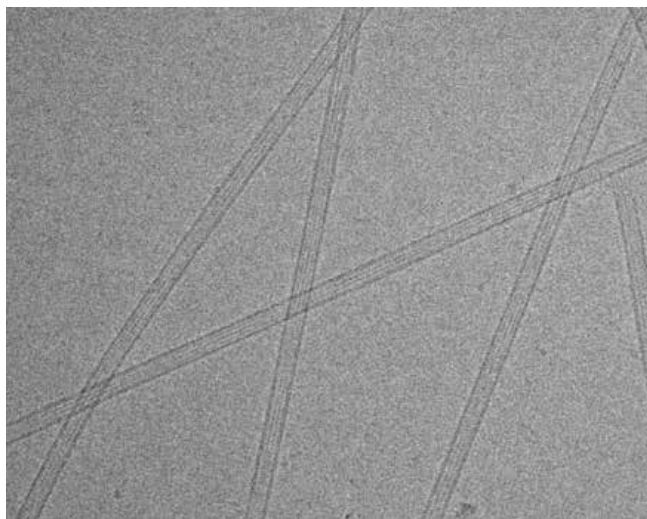
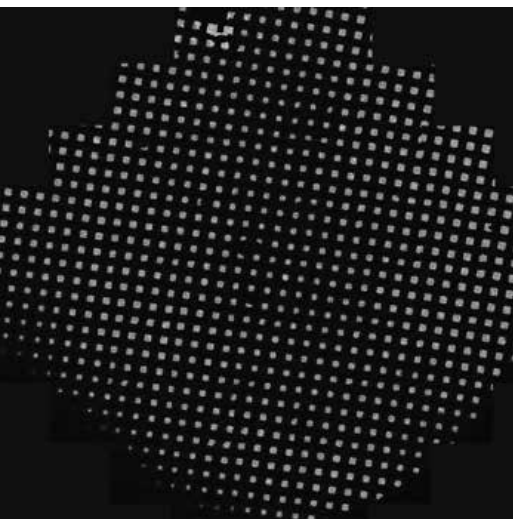




# Applications

The Leica EM GP is designed for all EM laboratories with a need to view vitrified fluid samples or extremely thin samples in the cryo-TEM, including biological research, virology, protein crystallography, pharmaceutical research, cosmetics and industrial laboratories.

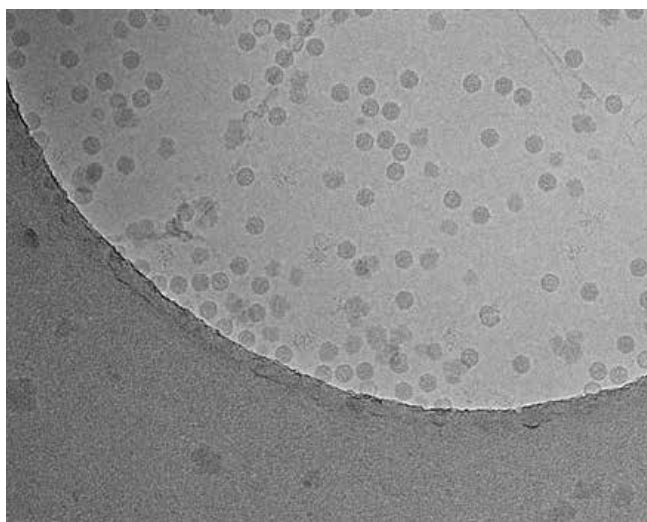
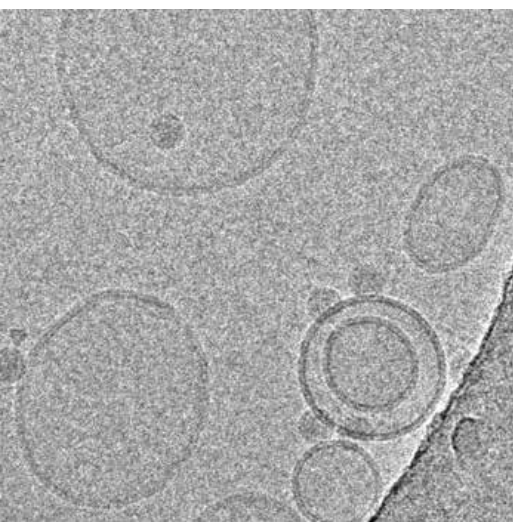
Samples that can be prepared vary for example from suspensions of viruses, liposomes, microtubules, proteins and other cellular components to paint or solutions and emulsions in both aqueous and inorganic solvents. The Leica EM GP can be used to plunge freeze samples not only on EM grids for the Bare Grid Technique, but also sapphire discs and samples in freeze fracture planchettes.



Left: Montage overview of plunge frozen grid. Note the homogeneity of the film thickness.

Right: Microtubules

Micrographs courtesy of Dr. Guenter Resch, IMP/IMBA Electron Microscopy Facility, Vienna, Austria



Left: Liposomes

Right: Rhinovirus particles on holey carbon film

Micrographs courtesy of Angela Pickl-Herk, MFPL, Vienna, Austria

Die fruchtbare Zusammenarbeit „mit dem Anwender, für den Anwender“ ist seit jeher Grundlage für die Innovationskraft von Leica Microsystems. Auf dieser Basis haben wir unsere fünf Unternehmenswerte entwickelt: Pioneering, High-end Quality, Team Spirit, Dedication to Science und Continuous Improvement. Diese Werte mit Leben zu erfüllen, heißt für uns: **Living up to Life.**

Leica Microsystems ist global in drei Divisionen tätig, die in ihrem jeweiligen Segment zu den Marktführern zählen.

#### LIFE SCIENCE DIVISION

Die Life Science Division von Leica Microsystems erfüllt die Bildgebungsanforderungen der Wissenschaft mit höchster Innovationsfähigkeit und technischem Know-how für die Visualisierung, Messung und Analyse von Mikrostrukturen. Durch ihre Vertrautheit mit Forschungsapplikationen bringt die Division ihren Kunden den entscheidenden Vorsprung in der Wissenschaft.

#### INDUSTRY DIVISION

Mit hochwertigen und innovativen Bildgebungssystemen für die Betrachtung, Vermessung und Analyse von Mikrostrukturen unterstützt die Industry Division von Leica Microsystems das Streben ihrer Kunden nach höchster Qualität und Ergebnissen. Ihre Lösungen werden bei industriellen Routine- und Forschungsanwendungen, in der Materialwissenschaft und Qualitätssicherung, in der Forensik und bei Schulungsanwendungen eingesetzt.

#### MEDICAL DIVISION

Die Medical Division von Leica Microsystems unterstützt Mikroschirurgen in der Patientenversorgung und stellt ihnen als innovativer Partner qualitativ hochwertige Operationsmikroskope für aktuelle und zukünftige Belange zur Verfügung.

Leica Microsystems – ein internationales Unternehmen mit einem kompetenten weltweiten Kundendienstnetz:

Weltweit aktiv	Tel.	Fax
Australien · North Ryde	+61 2 8870 3500	2 9878 1055
Belgien · Diegem	+32 2 790 98 50	2 790 98 68
Dänemark · Ballerup	+45 4454 0101	4454 0111
Deutschland · Wetzlar	+49 64 41 29 40 00	64 41 29 41 55
England · Milton Keynes	+44 800 298 2344	1908 246312
Frankreich · Nanterre Cedex	+33 811 000 664	1 56 05 23 23
Italien · Mailand	+39 02 574 861	02 574 03392
Japan · Tokio	+81 3 5421 2800	3 5421 2896
Kanada · Concord/Ontario	+1 800 248 0123	847 405 0164
Korea · Seoul	+82 2 514 65 43	2 514 65 48
Niederlande · Rijswijk	+31 70 4132 100	70 4132 109
Österreich · Wien	+43 1 486 80 50 0	1 486 80 50 30
Portugal · Lissabon	+351 21 388 9112	21 385 4668
Schweden · Kista	+46 8 625 45 45	8 625 45 10
Schweiz · Heerbrugg	+41 71 726 34 34	71 726 34 44
Singapur	+65 6779 7823	6773 0628
Spanien · Barcelona	+34 93 494 95 30	93 494 95 32
USA · Buffalo Grove/Illinois	+1 800 248 0123	847 405 0164
Volksrepublik China · Hongkong	+852 2564 6699	2564 4163
· Shanghai	+86 21 6387 6606	21 6387 6698